

Accredited Research Data Centres (RDCs)

- Social Data
- Economic Data
- Education Data
- Health Data
- Behavioural Data
- Qualitative Data
- Other

■ Archive for Spoken German at the Institute for German Language (FDZ-AGD)

■ Centre for European Economic Research (ZEW-FDZ)

■ Data Service Center for Business and Organizational Data (FDZ-BO)

■ Deutsche Bundesbank (RDSC Bundesbank)

■ DIPF German Institute for International Educational Research (FDZ Bildung)

■ Federal Centre for Health Education (FDZ BZgA)

■ Federal Institute for Vocational Education and Training (BIBB-FDZ)

■ Federal Statistical Office (FDZ-Bund)

■ German Centre for Gerontology (FDZ-DZA)

■ German General Social Survey at GESIS (RDC ALLBUS)

■ German Microdata Lab at GESIS (RDC GML)

■ German Pension Insurance (FDZ-RV)

■ German Youth Institute (FDZ-DJI)

■ Halle Institute for Economic Research (RDC-IWH)

■ Higher Education Research and Science Studies (fdz.DZHW)

■ Institute for Educational Quality Improvement (FDZ IQB)

Data Access for Researchers

The German Data Forum has successfully established a decentralised network of accredited research data centres (RDCs) as a model solution for scientific data access. RDCs facilitate flexible and comprehensive access to research data in accordance with data protection regulation. A total of 31 research data centres are currently accredited. They work together in the Standing Committee Research Data Infrastructure (FDI Committee) to improve the data and services they provide for science and research. The research data centres are continuously evaluated in an annual monitoring procedure.

For more information on the FDI Committee, the accredited data centres and the data they offer, please visit our website: www.ratswd.de/fdz

■ Institute for Employment Research of the German Federal Employment Agency (FDZ BA at IAB)

■ International Data Service Center (IDSC) at the Institute for the Study of Labor (IZA)

■ International Survey Programmes at GESIS

■ Leibniz Institut for Psychology Information (FDZ Psychdata at ZPID)

■ Leibniz-Institute for Educational Trajectories at the Otto-Friedrich-University Bamberg (RDC-LifBi)

■ LMU-ifo Economics & Business Data Center (EBDC)

■ Panel Analysis of Intimate Relationships and Family Dynamics (FDZ pairfam)

■ Programme for the International Assessment of Adult Competencies at GESIS (RDC PIAAC)

■ RDC Elections at GESIS

■ Robert Koch-Institute (RDC RKI)

■ RWI – Leibniz-Institute for Economic Research (FDZ Ruhr at RWI)

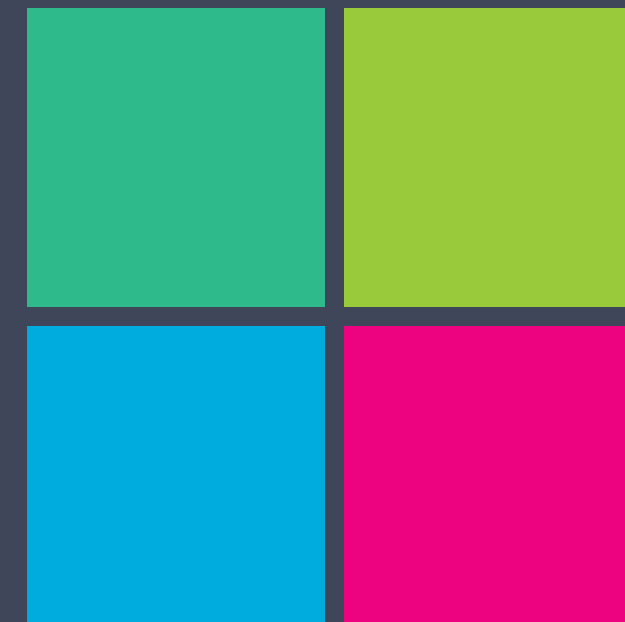
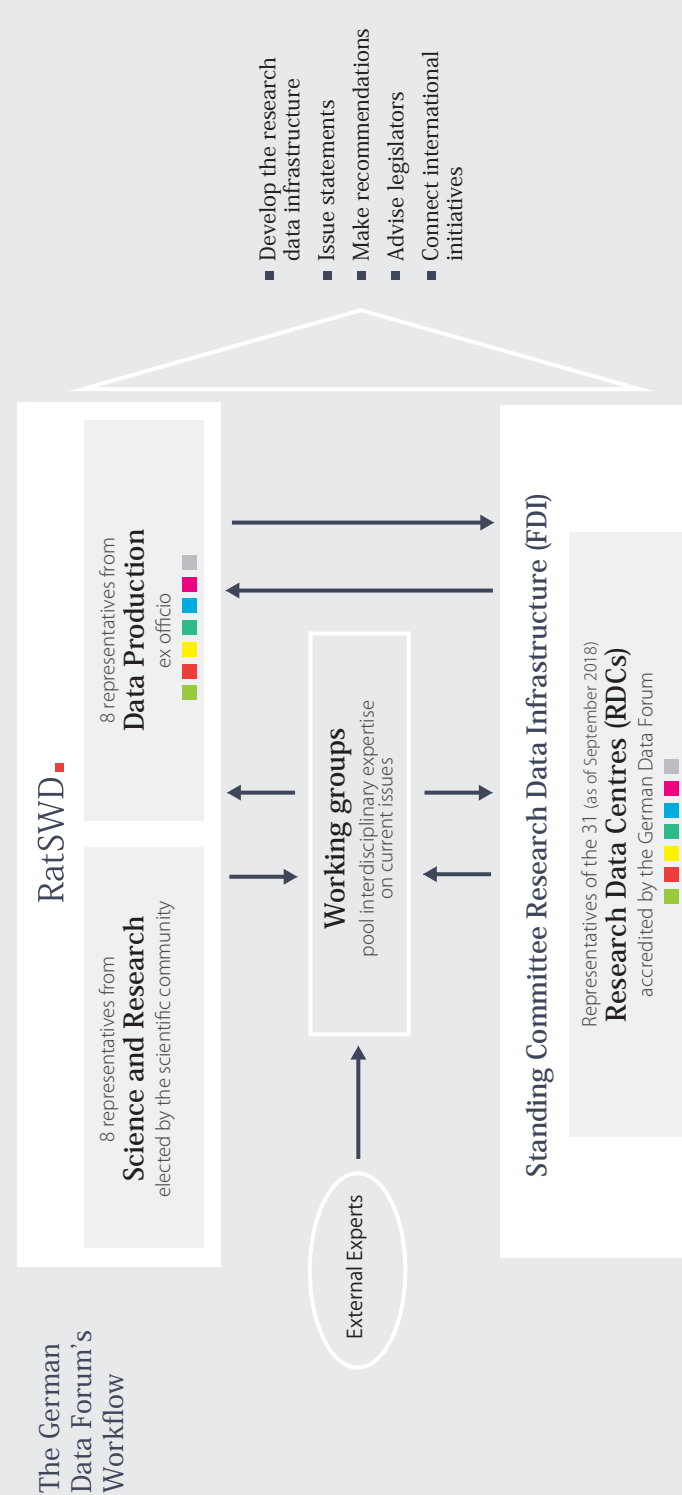
■ Socio-Economic Panel at DIW Berlin (RDC SOEP)

■ Statistical Offices of the Länder (FDZ-Länder)

■ Stifterverband (RDC Wissenschaftsstatistik)

■ Survey of Health, Ageing and Retirement in Europe (FDZ SHARE)

as of September 2018



Research. Data. Infrastructure.

The German Data Forum advises the federal government and the governments of the Länder on expanding and improving the research data infrastructure for the empirical social, behavioural and economic sciences. It was founded in 2004. As an institutionalised forum for dialogue, it facilitates a continuous exchange between data producers and the data users in science and research with the aim of improving access to high-quality and scientifically potent data. These data are a product of public, private and scientific activities.

The German Data Forum consists of eight representatives from social, behavioural and economic research, who gain legitimacy by election, and eight representatives of major data producers. This mode of equal representation ensures a broad range of expertise on the committee. The German Data Forum plays a key role in developing research infrastructures in the social, behavioural and economic sciences and is committed to creating research-friendly legal and political frameworks.

Moreover, the German Data Forum coordinates 31 data centres, which are accredited according to its guidelines. The German Data Forum has created an infrastructure enabling researchers to gain flexible access to a wide range of data.

6th Appointment Period (2017–2020)

Representatives of the Empirical Social, Behavioural, and Economic Sciences



Prof. Regina T. Riphahn, Ph.D.
(Chair)
University of Erlangen-Nuremberg



Prof. Dr. Cordula Artelt
Otto-Friedrich University Bamberg



Prof. Dr. Thomas K. Bauer
Ruhr University of Bochum and RWI - Leibniz Institute for Economic Research



Prof. Dr. Anja Göritz
University of Freiburg



Prof. Dr. Michael Eid
Freie Universität Berlin



Prof. Dr. Monika Jungbauer-Gans
German Centre for Research on Higher Education and Science Studies (DZHW) and University of Hannover



Prof. Dr. Stefan Liebig
Bielefeld University and Socio-Economic Panel (SOEP) at DIW Berlin



Prof. Dr. Kai Maaz
Goethe University Frankfurt and German Institute for International Educational Research (DIPF)

Representatives of Data Production



Prof. Stefan Bender
(Vice Chair)
Deutsche Bundesbank



Hans-Josef Fischer
Statistical Offices of the Länder



Heike Habla
Federal Statistical Office



Dr. Cornelia Lange
Robert Koch-Institute (RKI)



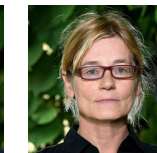
Sabine Ohsmann
German Pension Insurance



Prof. Dr. Jürgen Schupp
Socio-Economic Panel (SOEP) at DIW Berlin



Prof. Dr. Mark Trappmann
Federal Employment Agency



Dr. Heike Wirth
GESIS Leibniz Institute for the Social Sciences

Key Facts

Organisation: Advisory council to the federal government

Members: 8 elected representatives from the empirical social, behavioural and economic sciences and 8 representatives from data production

Term of office: 3 years

Founded: 2004

Standing Committee Research Data Infrastructure (FDI): Representatives of the 31 research data centres, accredited according to the German Data Forum's guidelines

Funding: Federal Ministry of Education and Research

Tasks: Strategic development of the research data infrastructure | Representing the interests of data producers and data users | Advising legislators and science institutions | Accreditation and evaluation of research data centres | Connecting research data infrastructures on a European and international level | Organising communication events, academic symposiums and the triennial Conference for Social and Economic Data (KSWD)

Workflow: See the back of the flyer for an overview of the German Data Forum's workflow

German Data Forum
Rat für Sozial- und Wirtschaftsdaten (RatSWD)
Chausseestr. 111
D-10115 Berlin

office@ratswd.de

Phone: +49(0)30 2060 4912-24

www.ratswd.de/en

SPONSORED BY THE